

Dear Parent(s)/Guardian(s):

This syllabus, found online under Music and quick links, was created to be a guideline for the year. I have personally explained each of the sections of the syllabus to ensure student understanding. I have also provided the opportunity for students to share this information with you so that you might be aware of your student's progress. Please sign below to show that you have reviewed the syllabus with your student and understand the guidelines. If you have any questions at any time, feel free to email me at [jgarcia@stanthonygardena.org](mailto:jgarcia@stanthonygardena.org). Please remember that you can check your student's progress by looking up their grades on [gradelink](#).

Please fill out the google form [here](#) by Friday, September 6, 2024.

Thank you,  
Mrs. Garcia

---

**ST. ANTHONY OF PADUA  
MUSIC AND PERFORMING ARTS  
2023-2024 SCHOOL YEAR**

**Teacher:** Mrs. Garcia  
jgarcia@stanthonygardena.org



**Mission:** The mission of the Performing Arts Department at St. Anthony of Padua School is to offer a high quality Performing Arts education by engaging students in theatre, music, and dance.

The Performing Arts Program enables students to celebrate the arts, explore their creativity, and share their talent with our community. Our goal of producing excellent performances instills major lifelong lessons among students such as: working together, becoming empathetic toward others, and striving towards their personal best.

Being involved in Performing Arts is about:

- Faith: Learning to have faith in others, working together, and problem solving.
  - Hope: Performing our personal best at all times so we can achieve our goals.
  - Love: Striving toward empathy, compassion, and kindness to all people.
  - Joy: Expressing creativity through many different disciplines to glorify our Lord.
- Most importantly, in all that we do and perform, we hope our actions and performances point to God and show His goodness and love for His people.

**Class Description:** Music and the Performing Arts are designed for students to learn about music, theatre, and dance in a group setting. In addition to performing through singing, instruments, and theatre plays, they will also be taught basic music theory as well as the history of music, theatre, and dance. Succeeding in Performing Arts requires hard work, dedication and a desire to succeed individually and as a group.

**Guidelines to Harmony:** In the musical world, harmony is when different notes combine in unity to make a beautiful noise or a chord. In life and the classroom, we also need to work together in unison to achieve harmony!

**CHORD**

- C-** Comply with directions quickly
- H-** Have a positive attitude
- O-** Only try your best.
- R-** Respect time, space, people, and property
- D-** Do your part!

**ST. ANTHONY OF PADUA  
MUSIC AND PERFORMING ARTS  
2023-2024 SCHOOL YEAR**

**Guidelines to Harmony Further Explained:** “Real love is demanding. I would fail in my mission if I did not clearly tell you so. For it was Jesus – our Jesus himself – who said, “You are my friends if you do what I command you” (Jn 15:14). Love demands effort and a personal commitment to the will of God. It means discipline and sacrifice, but it also means joy and human fulfillment.” - Pope John Paul II

**Follow the Tribes Agreements:**

1. Mutual Respect
2. Attentive Listening
3. Show Appreciation/ No Put Downs
4. Right to Pass
5. Personal Best



**If you choose to break the rules:**

**Consequences (may be any of these depending on severity):**

**K-8:**

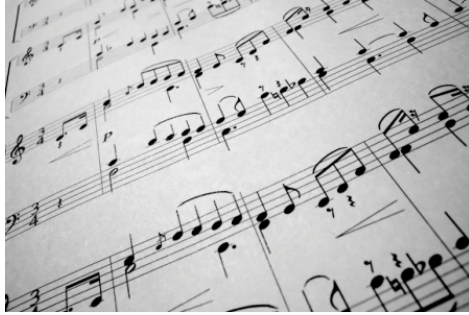
- Verbal Warning
- Students will clip down or up on class chart, or will be written down on my clipboard.
- Students who continue to break the rules will receive an immediate conduct warning, or a detention based upon the action and how many conduct warnings the students have already received in total.
- Students will receive a conduct warning, detention, or referral.

\* If a student receives a conduct warning or detention in music class, it will be added to the number of detentions they already have in their homeroom. Therefore, sometimes a conduct warning could result in a higher infraction due to the number they already have.

**Rewards:** As a class, students will be trying to create harmony. Each day harmony is achieved; they will receive a musical note on the musical staff. Once they have earned twelve musical notes the entire class will receive a surprise from me. The first class to reach it each trimester, will get an additional prize!

Individual students who are doing well are noticed and can clip up on their personal charts. There may also be star singers on certain days who receive a prize.

**ST. ANTHONY OF PADUA  
MUSIC AND PERFORMING ARTS  
2023-2024 SCHOOL YEAR**



**Class Objectives:** At the core of learning music and theatre is performance. Students will be singing, acting, and sometimes even dancing to show mastery of the skills. With that said, here are some specifics:

**Music:** The students will learn musical theory, the basic elements of music (expression, rhythm, form, melody, timbre, texture and harmony), music performance, composing, music history, and study how music connects to the world.

**K-8 Grade Music Students Will:**

- Read, notate, listen to, analyze, and describe music, using music terminology
- Sing, perform, and create varied types of music including music for Mass
- Compose and arrange music with different melodies and variations
- Analyze the role of music in past and present cultures throughout the world
- Critically assess and derive meaning from works of music according to the elements of music
- Apply what they learn in music across subject areas
- Develop creative skills in problem solving, communication, and time management

**Theatre Arts:** The students will learn the basics of acting, performing, directing, writing and tech theatre.

**K-8 Theatre Arts Students Will:**

- The student will learn theatrical terminology. This includes stage directions, areas of the theater, and acting terms.
- The student will demonstrate the ability to create and prepare theatrical work. This will include an understanding of playwriting, rehearsal procedures, and character development.
- The student will know how to evaluate a theatrical work in the areas of form, content, technique, and purpose.
- The student will demonstrate an awareness of a variety of theatrical styles.
- The student will demonstrate that theatre both reflects and influences culture.
- The student will demonstrate the ability to perform on stage.

**ST. ANTHONY OF PADUA  
MUSIC AND PERFORMING ARTS  
2023-2024 SCHOOL YEAR**

- The student will demonstrate the ability to be responsible and to work successfully with his/her peers.



**Curriculum Map:** Each year follows the same schedule, however the theory, music history, and musicals are always changing. Please see the curriculum map for this year for more information. For the younger grades there is a heavier emphasis on learning songs, hand motions, and rhythms. Older grades will focus on harmony, musical history, and theory. Please look for a detailed curriculum map on the Quick Links on the Music Blog.

**Method of Evaluation:** Grades will be based on accumulated points earned. Class participation, graded work, quizzes, tests, projects, performances, and other assignments will be given a point value based on their importance. **STUDENTS ARE NOT GRADED BY TALENT.** Their scores are based on the effort they put into the class and improvement seen over the course of a semester. With effort everyone improves. I will be using the grading scale outlined in the student handbook.

**Google Classroom:** 3-8<sup>th</sup> grade will use Google Classroom to turn different assignments in for Music Class. These assignments will tie into the music curriculum and be worth points separate to their participation grade.

**Attendance:** Regular attendance is critical for success in this course. Please come to music class prepared and ready to learn!

For donations, please label them Music Rm. 5. You can drop them off at the office.

**General Donation Supply List**

- 1 container of disinfectant wipes
- Tissue box
- White copy paper (8.5x11)
- Colored copy paper (8.5x11 or 11x14, good colors to buy: Red, Blue, Green, Pastels)
- Duracell Double A (AA) Batteries (for microphones and candles)
- Clip boards (the brown ones, with a silver clip for students to write on)

**Grades K-2:**

- None

**ST. ANTHONY OF PADUA  
MUSIC AND PERFORMING ARTS  
2023-2024 SCHOOL YEAR**

**Grades 3-8 (This doesn't need to be dropped off, but students should have this for Music class)**

- Personal ipad or computer device
- Personal writing utensil
- Notepaper/Notebook to take notes

The lab fee associated with this class is \$15, which is included in your tuition contract. Such fees include instruments, music express magazine (curriculum for K-8), licensing and rights for the classroom shows.



**Bathroom Policy:** We only have about an hour together a week for music. Therefore, you are expected to use the bathroom before or after class. Please keep this in mind and do your best to be respectful in this matter. The following is an outline of policies per grade:  
K-2: Allowed to go, but not in the first or last 5 minutes.

3-5: Will receive three bathroom passes to use within the trimester.

6-8: Will use their bathroom passes in their planners (same ones used for other classes)

Sometimes, in special circumstances students will be permitted to go to the restroom as specified by their parent/guardian.

**Participation:** This class relies heavily on your daily participation. You will receive a participation score every week out of ten points. To receive the full score, a student must be actively engaged in what the class is doing. You will not receive credit if the majority of your time in class is spent talking to others, zoning out, sleeping, etc.

The points will be broken down by each student having ten each week. If a student chooses to break the rules or be off task, they will lose participation points. Everyone is expected to be in class and participating in a positive manner to allow others and themselves to learn.

**Students will begin each week with 10 participation points. These points can go down depending on how they act in music class for the week. If a student clips down they will lose a point, if they clip up they can gain those points back.**

A note about participation: If a student chooses not to do their work and constantly talk, lip sync or be disrespectful in any way, their weekly participation grade will be lowered.

**ST. ANTHONY OF PADUA  
MUSIC AND PERFORMING ARTS  
2023-2024 SCHOOL YEAR**

**Average Participation means:**

- Coming to class with your materials, music and anything else you need for that day. Any student that does not have their materials will be given an effort notice.
- Lining up silently before entering the room and waiting for the teacher to greet and give instructions.
- Entering the classroom and sitting down silently.
- Sing. This should be obvious, but if you are lip synching or just sitting there you are not participating.
- Do not complain over choice of music. I will try to incorporate what the group wants; however, part of this class is to teach about music in many different genres. Be patient and do not judge a song by how it sounds at the beginning, you may learn to like it.
- Do not talk when I am telling you instructions or we are switching to a different song.
- Look at your music while others are performing. It will help you to learn your part if you listen and do not talk while others are singing.
- Memorize your musical part.
- When there is a question, raise your hand and wait for me to acknowledge you.
- When there is a question about your work, grade or a complaint, come and see me before, after or sometime during the school day that is not in the middle of class time.
- If I am in the middle of answering a question please do not interrupt me. Instead, wait with your hand up, or wait in an organized line at the front of the room.
- No cell phones, ipods, ipads or other electronic devices should be used, unless we are working on a specific project as a class.
- Do not fool around during any rehearsals, this includes: playing with basketballs or other objects, talking, leaving rehearsal without permission, climbing on different equipment etc.
- At the end of class, sit quietly and wait to be dismissed by me.

**Performance Policy:** This is a performance-based class. If you are not present for performances you are not fulfilling a very essential element of the class. In general, there will be two or three mandatory performances during the school year. This year **The Christmas Program and Classroom Musical Shows are MANDATORY.** These performances are considered essential skills and missing them for *any* reason will result in a failing grade. This is also true for the dress rehearsal the day prior to each event. Any conflicts must be cleared with me **now** and the dates of the concert should be put on your family calendars to avoid any future conflicts. **These concerts should be treated like a Final Exam!** Rides and other issues that may arise this day must be worked out so the students arrive at the correct call time and are not late. If we have other performances, they should be considered a priority (but not mandatory). *If a conflict arises you must inform me within two weeks of any performance that I have given advance notice on.*

**ST. ANTHONY OF PADUA  
MUSIC AND PERFORMING ARTS  
2023-2024 SCHOOL YEAR**

Failure to do so will result in the loss of points. You will be allowed to make up those points with a make-up assignment that is to be completed outside of school and on your own time. This applies to absences due to emergency and illness as well. **Points for the Christmas Program and Classroom Shows cannot be made up.** If they are missed and I have not been notified of your absence, you will receive a zero for the performance. You are also required to attend the dress rehearsal the day before the event. **Costumes for both shows are your responsibility. Students must be in costume to receive full credit. You are not required to spend a lot of money on costumes, but there should be effort made to get something together. Please do NOT wait until the last minute.**

**Homework:** Music and Theatre homework will usually consist of memorizing parts and songs for plays. There will also occasionally be projects, tests, and reflections to do as homework to work on. We do have a line memorization due date each year for the Spring Shows of **Tuesday, April 8, 2025.** All your songs and lines should be memorized by that date and we will have a test to determine if the students know their lines. The test will be a run-thru of the performance and students will be graded on how well they memorize their lines.

If the lines and songs are not memorized by that date, the student will receive an effort notice. If the lines are not memorized by the following rehearsal, participation points will start to be taken off. This is to help make the students more responsible for their lines and scripts and make it easier to block our scenes.

**Makeup Work:** It is the student's responsibility to find out what was done in class during their absence and to make up any missing assignments. If the student has a scheduled absence coming up, it is best to prearrange with the teacher to receive assignments. Those assignments will be due upon the student's return. All work missed during unscheduled absences will be due according to the number of class periods missed. For example, if a student misses two class periods in a row, they will have two class periods to make up the work.

**Late Work:** Late work for projects will be accepted for one week after the due date. Each day it is late there will be a 10% reduction (This excludes weekends; if something is turned in five days late the highest percentage a student can receive is a 50%). Once the week has ended the student will receive a 0 for the assignment.

**Extra Credit:** Extra credit will not be offered on an individual basis. However, the entire class will occasionally be given opportunities for extra credit throughout the year.

**Concert Dates:** Please put these dates on a calendar at home so they are not forgotten.

<b>Christmas Program:</b>	Dress Rehearsal	Friday, December 13, 2024 (During Class Time)
	Performance	Friday, December 13, 2024 6pm



**ST. ANTHONY OF PADUA  
MUSIC AND PERFORMING ARTS  
2023-2024 SCHOOL YEAR**

<b>Talent Show:</b>	Performance (Optional)	Thursday, October 17, 2024 1pm (During School)
<b>Spring Classroom Shows:</b>	K, 2, 4 Performance 1, 3, 5 Performance	Wednesday, May 28, 2025 8:30am Thursday, May 29, 2025 at 8:30am
<b>Spring Musical:</b>	Must audition, after school program, grades 3-8  <i>Spring Musical</i>	Thursday, May 29, 2025 at 6pm Friday, May 30, 2025 at 7pm Saturday, May 31, 2025 at 1pm Saturday, May 31, 2025 at 7pm

**Final Words of Encouragement:** Learning to sing, act, and dance is an exciting and unique opportunity! I encourage you to be prepared, participate, and be willing to take risks. With hard work and honest effort, I know you can succeed! I look forward to getting to know each of you and working together in order to gain mastery and appreciation of the material. I encourage you to always ask questions and find me if you ever feel lost or confused during the class.

**Note:** *The instructor reserves the right to make changes, additions, and deletions to the syllabus during the year. Thank you for being patient, understanding, and assuming positive intentions in every situation.*



**LIFE IS NOT A**  
*dress rehearsal.*  
**THE CURTAIN IS UP**  
*and you are on,*  
**SO GET OUT THERE**  
*& give it your*  
**BEST SHOT.**

**ST. ANTHONY OF PADUA  
MUSIC AND PERFORMING ARTS  
2023-2024 SCHOOL YEAR**